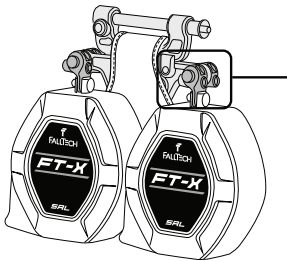


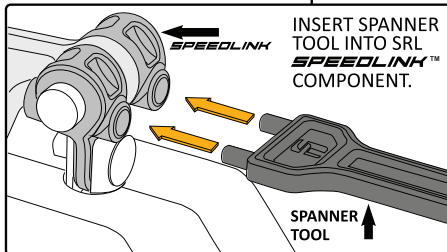


⚠ WARNING

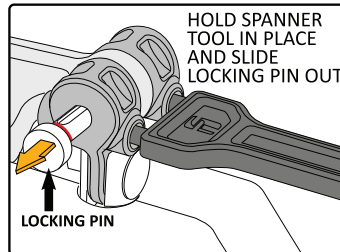
Always read and follow the manufacturer's instructions, labels and warnings before use. Failure to do so can result in serious injury or death. The purpose of this tool is to facilitate the replacement of the integral SRLs on the FallTech FT-X SRL family. Replacement of integral SRLs shall only be performed utilizing this tool and shall only be performed by a competent person. Integral SRLs shall be replaced only with SRLs of the same Class, lifeline type/material and hook type. See label inside FT-X SRL energy absorber cover for acceptable FallTech replacement part number. See FT-X SRL instruction manual supplied with the SRL for complete instructions on the application, installation, use, inspection, maintenance, service and storage of FT-X SRLs and for additional information on the replacement procedure. If you are unsure how to use this tool or have questions on the replacement procedure, contact FallTech.



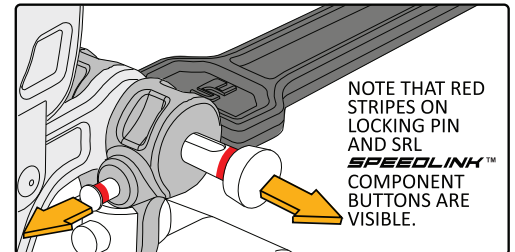
STEP 1



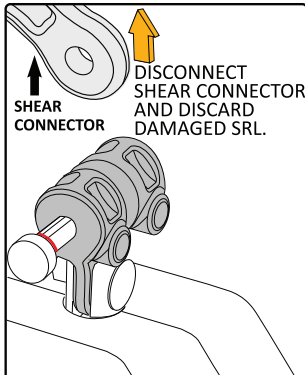
STEP 2



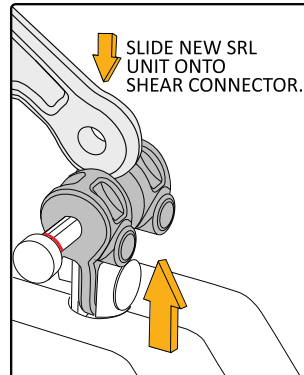
STEP 3



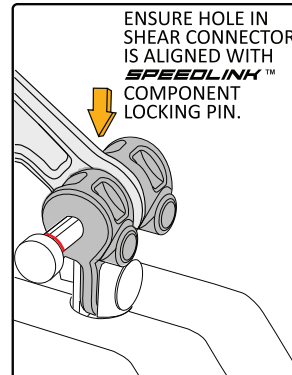
STEP 4



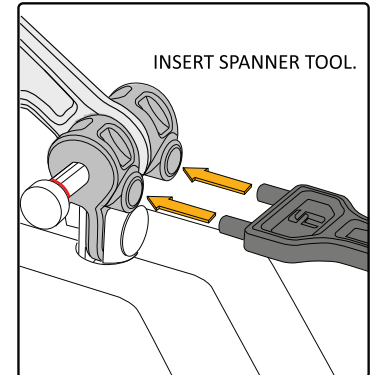
STEP 5



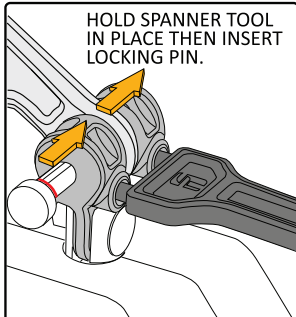
STEP 6



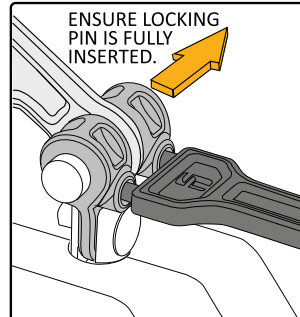
STEP 7



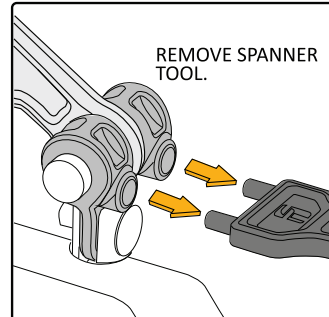
STEP 8



STEP 9



STEP 10



STEP 11

